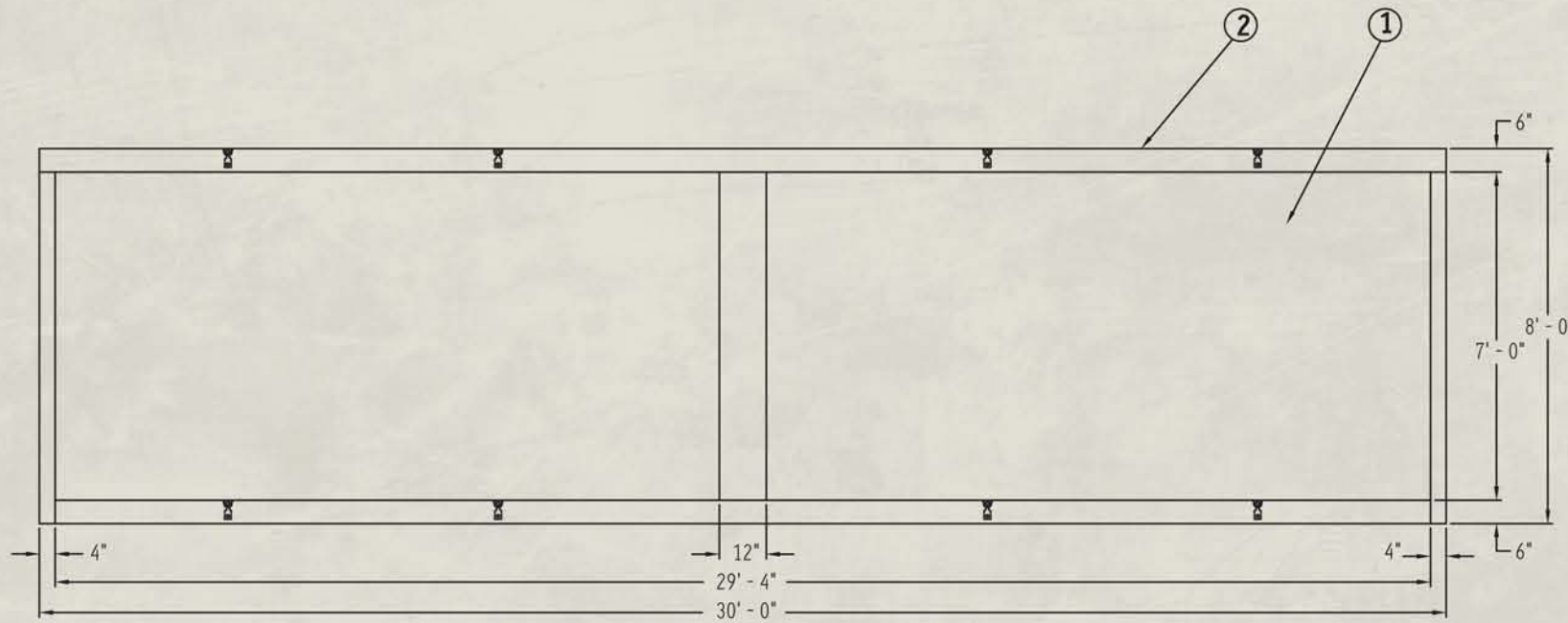
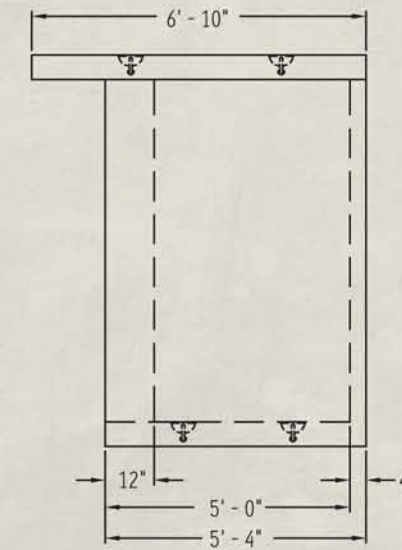


**PLAN VIEW**

3



**FRONT ELEVATION**



**RIGHT SIDE ELEVATION**

**BILL OF MATERIALS**

Item	Description	Quantity
1	PREFABRICATED PRECAST CONCRETE WALLS, FLOOR AND ROOF	1
2	POST TENSIONED ROOF	1
3	8T LIFTING ANCHORS	16

**SPECIFICATIONS**

- CONCRETE:** 5,000 psi @ 28 DAYS  
5%-8% ENTRAINED AIR
- REBAR:** ASTM A-615 GRADE 60
- DESIGN CRITERIA:** WALLS COMPLY WITH CITY OF CHICAGO BUILDING CODES AND 1993 BOCA CODES FOR 80 MPH WINDS
- FINISH:** FINISH OPTIONS  
 - SMOOTH CONCRETE  
 - EXPOSED AGGREGATE  
 - PAINTED  
 FLOOR IS SKID RESISTANT
- WEIGHT:** BASE: 27,626#  
 ROOF: 15,374#  
 TOTAL: 43,000#

**CONTACT UCP FOR SITE PREPARATION AND INSTALLATION INSTRUCTIONS**

**30'-0" x 6'-10" x 8'-0" PRECAST DUGOUT**



*Get the Precast Advantage!*