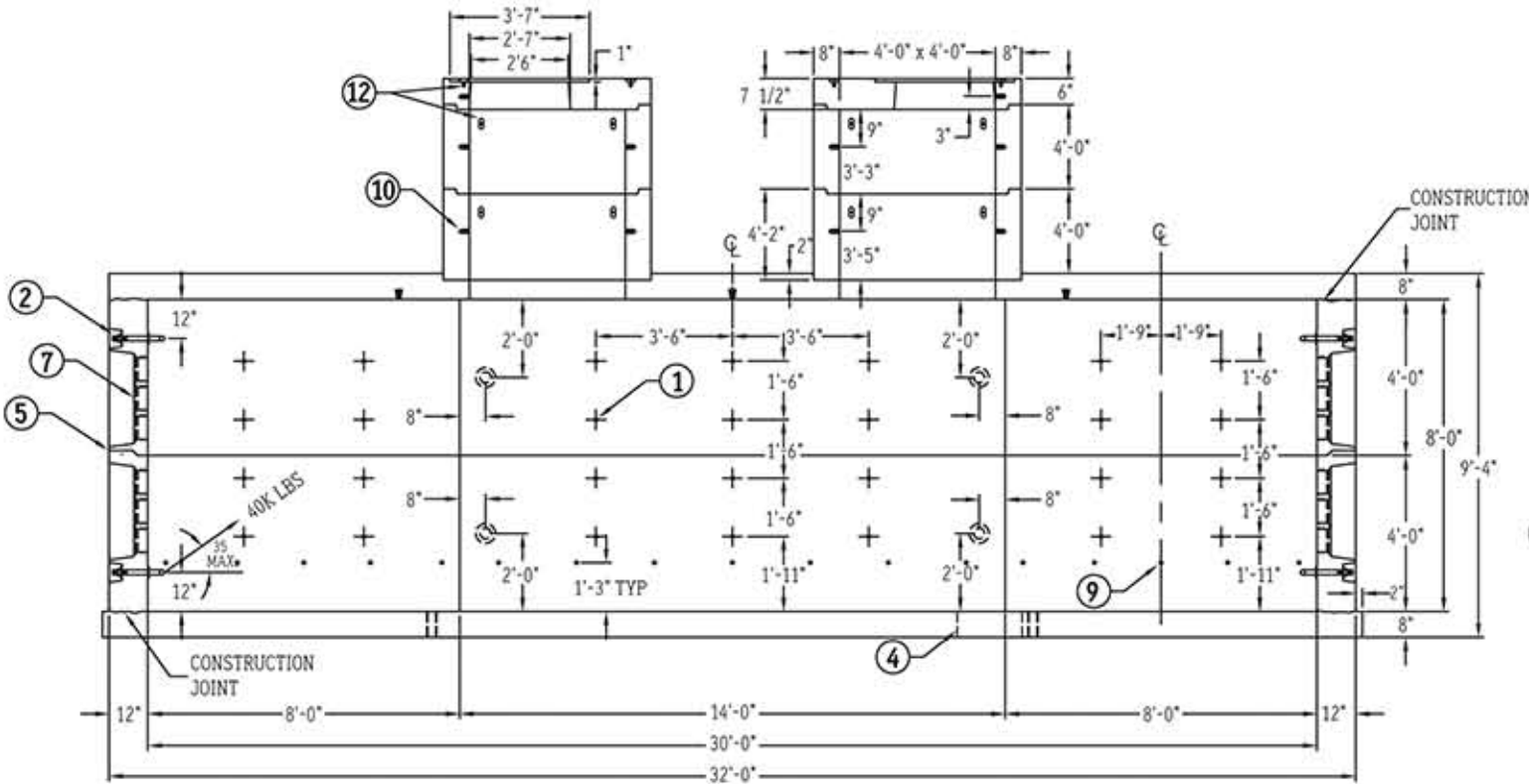
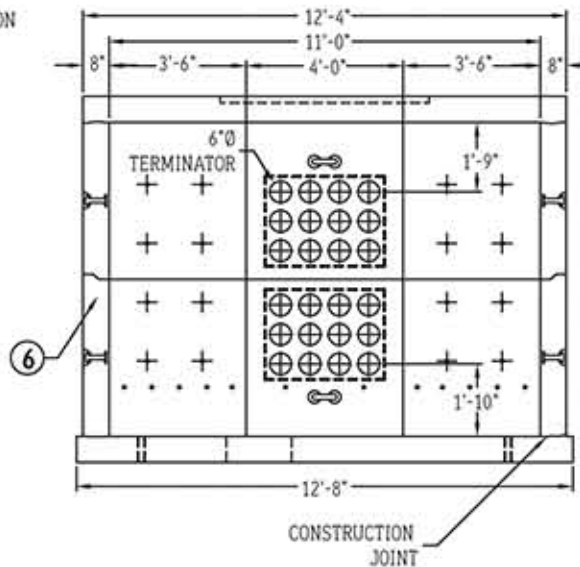


PLAN VIEW



SECTION A-A



SECTION B-B

SHOWN WITHOUT RISER SECTION

THIS 30'-0" X 11'-0" X 8'-0" MANHOLE DESIGNED FOR HIGH VOLTAGE TRANSMISSION APPLICATIONS IS REPRESENTATIVE OF SPECIAL STRUCTURES ROUTINELY DEVELOPED BY UTILITY CONCRETE PRODUCTS, LLC TO MEET UNIQUE CUSTOMER NEEDS. THESE TYPE OF STRUCTURES CAN BE DEVELOPED WITH THE FOLLOWING FEATURES VARIED TO MEET YOUR REQUIREMENTS:

- PLAN VIEW SHAPE, LENGTH AND WIDTH
- HEADROOM
- WALL, BASE, AND ROOF THICKNESS
- PULLING IRON STRENGTHS & CONFIGURATION
- H2O, E-80, OR AIRPORT LOADING
- MODULAR SECTIONS FOR WEIGHT AND HANDLING CONSIDERATIONS
- MANHOLE ENTRANCE CONFIGURATION
- CAST-IRON FRAME AND COVERS OR ALUMINUM HATCHES
- LADDER OR STEP CONFIGURATION AND MATERIAL
- DUCT OPENING LOCATIONS AND CONFIGURATIONS
- SUMP LOCATIONS AND CONFIGURATIONS
- RACKING PROVISIONS
- CORROSION RESISTANT HARDWARE AND REINFORCING

BILL OF MATERIALS

Item	Description	Quantity
1	CABLE RACK INSERTS: 1/2" Ø 304 STAINLESS STEEL THREADED INSERTS EACH WITH 1/2" Ø x 2" 304 SS HEX HEAD BOLT 1/2" SS WASHER 1/2" PVC WASHER	56
2	SS PULLING IRONS	4
3	10T LIFTING ANCHORS	8
4	20" Ø SUMP OPENING	2
5	1" BUTYL RUBBER JOINT SEALANT	16 ROLLS
6	REBAR, EPOXY COATED	
7	6" Ø DUCT TERMINATOR	48
8	2" ID PVC GROUND ROD HOLE	4
9	1/4" Ø PLASTIC THREADED INSERT 1/4" x 1" HEX HEAD SS BOLT 1/4" x 14" NYLON STRAP	38
10	3/8" Ø GALVANIZED STEEL THREADED INSERTS	20
11	3/4" Ø GALVANIZED STEEL THREADED INSERTS	3
12	4T LIFTING ANCHORS	24

SPECIFICATIONS

- CONCRETE:** 6,000 psi @ 28 DAYS
5%-8% ENTRAINED AIR
- REBAR:** ASTM A-615 GRADE 60
EPOXY COATED
- AVAILABLE DUCT ENTRANCES:** SINGLE DUCT TERMINATORS TO ACCEPT 6" Ø SCH 40 PVC CONDUIT OR CUSTOM CONFIGURATIONS AND/OR LOCATIONS
- DESIGN CRITERIA:**
- A) ASTM C858
 - B) LOADING PER ASTM C857, INCLUDING:
 - EARTH COVER: MIN 1'-0" MAX 9'-0"
 - AASHTO HS-20 WHEEL LOAD & APPLICABLE IMPACT
 - VERTICAL & LATERAL SOIL PRESSURES DETERMINED USING 120 PCF SOIL DENSITY
 - GROUNDWATER AT 3'-0" BELOW GRADE
 - C) STRUCTURAL DESIGN PERFORMED USING AASHTO STRENGTH DESIGN
 - D) REINFORCING COVER PER ACI 318
- WEIGHT:**
- A) TOP SECTION: 58,915#
 - B) BASE SECTION: 63,400#
 - C) 4'-0" RISER: 7,466# EACH
 - D) RISER LID: 1,598# EACH
 - E) TOTAL MANHOLE: 158,571#

REFERENCES:

1. FOR DETAILS ON PULLING IRONS, INSERTS, SUMPS, TERMINATORS, RACKING HARDWARE AND LADDERS REFERENCE TABLE OF CONTENTS.
2. FOR DETAILS ON COLLARS AND FRAMES & COVERS REFERENCE TABLE OF CONTENTS.

**30'-0" x 11'-0" x 8'-0" "STRAIGHT" TYPE MANHOLE
 BASE, TOP AND RISER ASSEMBLY**

Get the Precast Advantage!